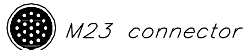
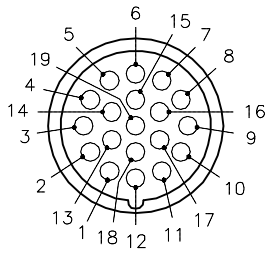
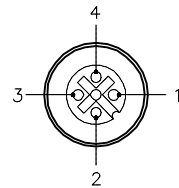


MALE END VIEW (P1)



FEMALE END VIEW (J1-J8)



1=Volt -  
2=Volt +  
3=Shield  
4=Ground



SPECIFICATIONS

MATERIAL

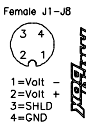
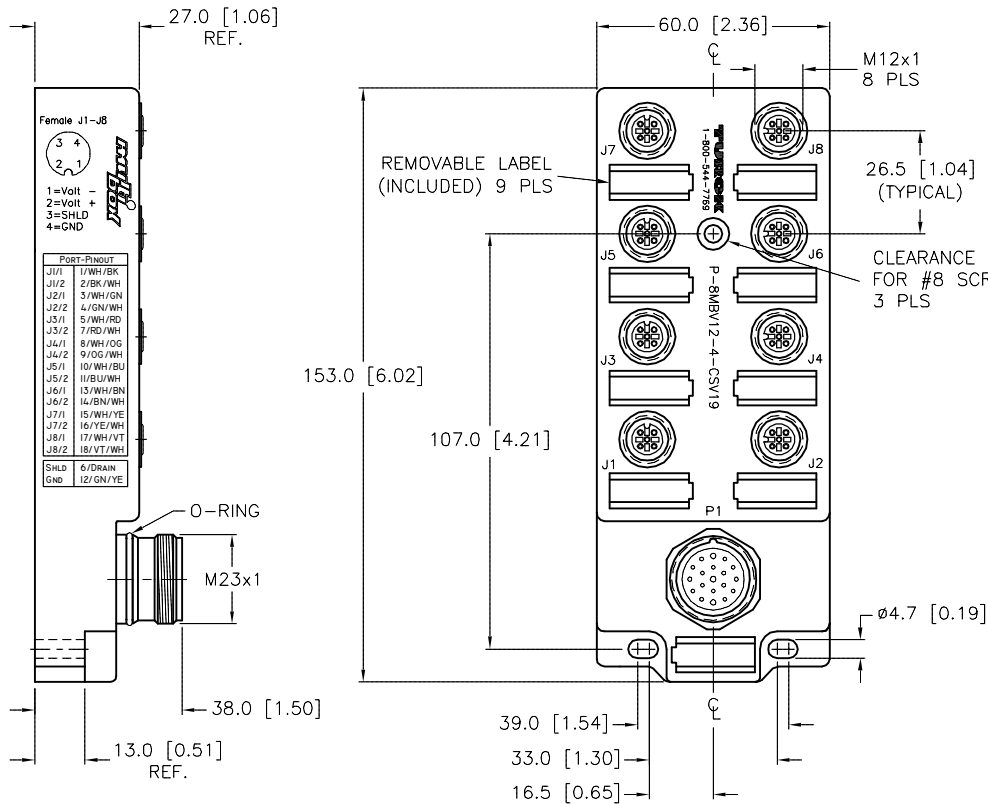
HOUSING/COLOR	NYLON/BLACK
RECEPTACLES	STAINLESS STEEL/PASSIVATED
CONTACT CARRIERS/COLOR	NYLON/BLACK (J1-J8), PBT/WHITE (P1)
CONTACTS	GOLD-PLATED BRASS
SEALING RING	VITON O-RINGS

ELECTRICAL DATA

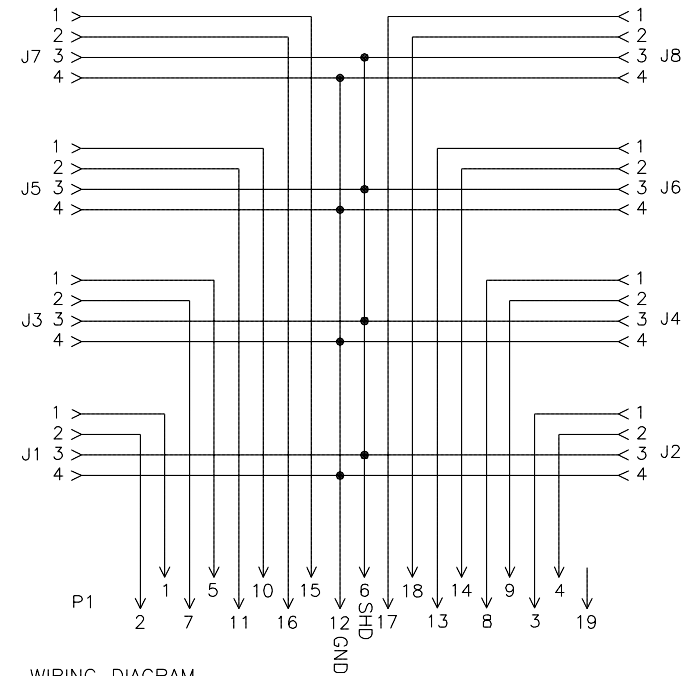
OPERATING VOLTAGE	150 V
OPERATING CURRENT	4.0 AMPS PER PORT, 8.0 AMPS TOTAL
SPACINGS	to VDE 0110 GROUP C

MECHANICAL DATA

PROTECTION CLASS to DIN 40050	IP 67 - ONLY WHEN ALL RECEPTACLES ARE COVERED WITH PLUGS OR CONNECTED
OPERATING TEMPERATURE	-40°C to +105°C (-40°F to +221°F)



PORT-PINOUT	
J1/1	1/WH/BK
J1/2	2/BK/WH
J2/1	3/WH/GN
J2/2	4/GN/WH
J3/1	5/WH/RD
J3/2	7/RD/WH
J4/1	8/WH/OG
J4/2	9/OG/WH
J5/1	10/WH/BU
J5/2	11/BU/WH
J6/1	13/WH/BN
J6/2	14/BN/WH
J7/1	15/WH/YE
J7/2	16/YE/WH
J8/1	17/WH/VT
J8/2	18/VT/WH
SHLD	6/DRAIN
GND	12/GN/YE



WIRING DIAGRAM

SOURCE DRAWING - FOR REFERENCE ONLY



CLOSURE CAPS  
(2 INCLUDED)

RELATED DOCUMENTS 1. 2. 3. 4.	3RD ANGLE PROJECTION 	THIS DRAWING IS CONFIDENTIAL AND THE PROPERTY OF TURCK INC. USE OF THIS DOCUMENT WITHOUT WRITTEN PERMISSION IS PROHIBITED.		3000 CAMPUS DRIVE MINNEAPOLIS, MN 55441 1-800-544-7769 (763) 553-7300 (763) 553-0708 fax turck.com	
	MATERIAL SEE SPECIFICATIONS	ALL DIMENSIONS DISPLAYED ON THIS DRAWING ARE FOR REFERENCE ONLY	DRFT DD	DATE 11/17/03	DESCRIPTION P-8MBV12-4-CSV19
	FINISH SEE SPECIFICATIONS		APVD	SCALE 1=2	
			UNIT OF MEASUREMENT <b>MILLIMETER [ INCH ]</b>		IDENTIFICATION NO. U0918-67

D	UPDATED CLOSURE CAPS	TV	09/17/15	48811
REV	DESCRIPTION	BY	DATE	ECO NO.

DO NOT SCALE THIS DRAWING

FILE: EURO-B\U0918-67

SHEET 1 OF 1